



PRI3270-2014 Model number: PRI3270-2014

3 beds • 2 baths • 2240 sq.ft. • 32' width • 70' depth

Our home building facilities invest in continuous product and process improvements. Plans, dimensions, features, materials, specifications and availability are subject to change without notice or obligation. Renderings and floor plans are representative likenesses of our homes and may differ from the actual homes. We invite you to tour a Home Center near you and inspect the highest value in quality housing available or call (318) 616-3500 to speak with a Home Consultant. Copyright 2017, CMH. All rights reserved.

<https://www.claytonhomesopelousas.com>

**CLAYTON HOMES-
OPELOUSAS**

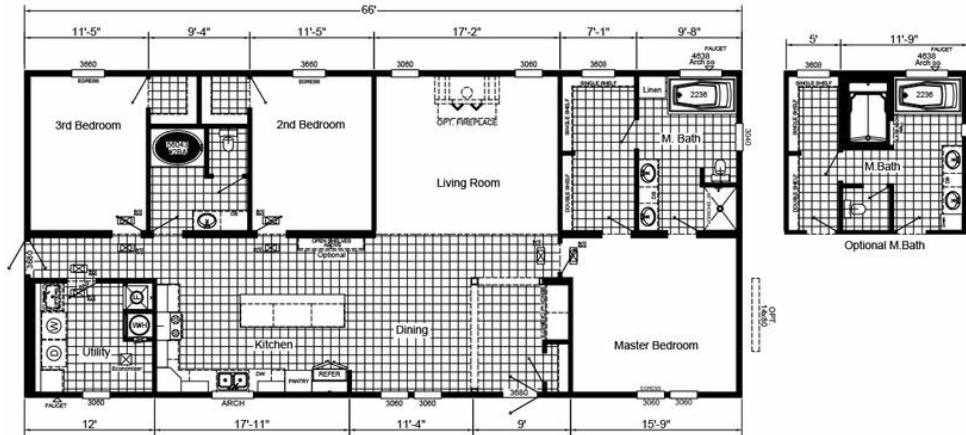
15095 US HWY 190
OPELOUSAS, LA 70570

Monday - Thursday: 9am - 6pm
Friday: 9am - 6pm
Saturday: 9am - 5pm
Sunday: Closed

(318) 616-3500

PRIME

MODEL: PRI3270-2014



32'-0" x 70'-0" 1,980 Sq.Ft

3 Beds 2 Baths



PRI3270-2014 Model number: PRI3270-2014

3 beds • 2 baths • 2240 sq.ft. • 32' width • 70' depth

Our home building facilities invest in continuous product and process improvements. Plans, dimensions, features, materials, specifications and availability are subject to change without notice or obligation. Renderings and floor plans are representative likenesses of our homes and may differ from the actual homes. We invite you to tour a Home Center near you and inspect the highest value in quality housing available or call (318) 616-3500 to speak with a Home Consultant. Copyright 2017, CMH. All rights reserved.

<https://www.claytonhomesopelousas.com>

**CLAYTON HOMES-
OPELOUSAS**

15095 US HWY 190
OPELOUSAS, LA 70570

Monday - Thursday: 9am - 6pm
Friday: 9am - 6pm
Saturday: 9am - 5pm
Sunday: Closed

(318) 616-3500